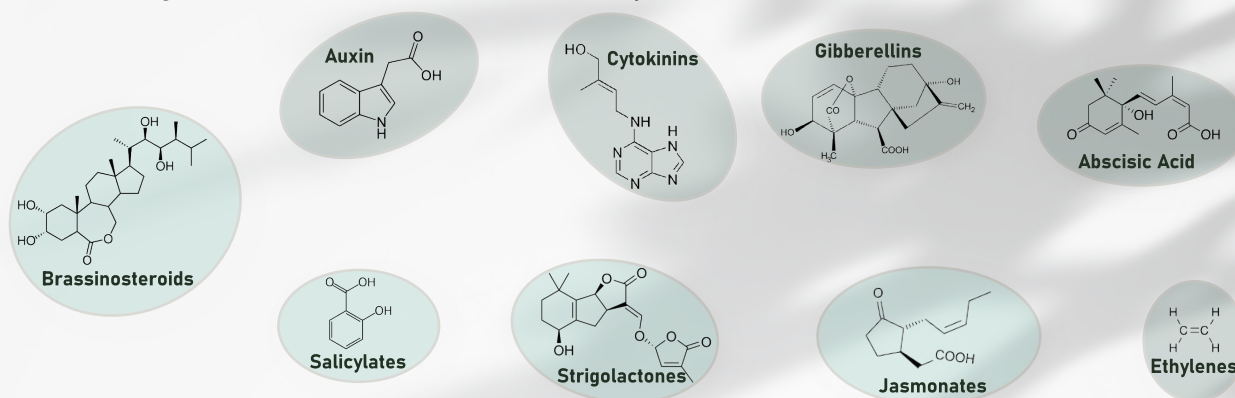


# Phytohormones Detection

## Introduction of plant hormone

Phytohormone is also known as plant natural hormone or plant endogenous hormone. It refers to some trace organic compounds produced in plants that can regulate (promote, inhibit) their own physiological processes. Based on LC-MS/MS technology, **Metware Biotechnology has developed a professional method for the detection of plant hormones, covering 107 kinds, such as ABA, Auxin, CK, Ethylene, GA, JA, SA, SL and BR.**



## Product services

Products	Compounds List	Project Cycle	Note
Phytohormone family bucket (88 compounds)	ABA category(2) Auxin category(26) CK category(36) Ethylene category(1)	30 d	Due to the extremely low levels of phytohormones, it is normal to have undetected conditions (the phytohormone level in the sample is below the detection limit)
GAs (18 compounds)	GA <sub>1</sub> /GA <sub>3</sub> /GA <sub>4</sub> /GA <sub>5</sub> /GA <sub>6</sub> /GA <sub>7</sub> /GA <sub>8</sub> /GA <sub>9</sub> / GA <sub>15</sub> /GA <sub>19</sub> /GA <sub>20</sub> /GA <sub>24</sub> /GA <sub>29</sub> /GA <sub>34</sub> /GA <sub>51</sub> / GA <sub>53</sub> /GA <sub>12</sub> -ald/GA <sub>44</sub>	30 d	
BRs (11 compounds)	BL/24-epiBL/28-norBL/ 28-homoBL/CS/ 6-deoxoCS/28-norCS/ 28-homoCS/6-deoxo-24-epiCS/ TY/28-norTE	30 d	

## Product advantages

### 01 Complete variety

107 kinds of plant hormones can be detected

### 02 High sensitivity

External standard + internal standard method, linear relationship of the standard curve is above 0.99

### 03 Rich experience

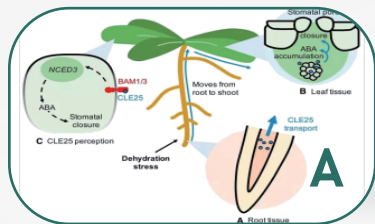
More than 2000 project experiences covering 500+species, and have been published in Cell, Nature Commun, Plant Biotech J and other journals

### 04 Quantitative accuracy

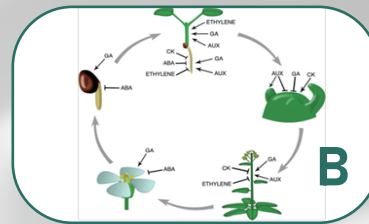
Using AB Sciex QTRAP ® 6500 LC-MS/M platform, The sensitivity can reach ng/ml level.

# Application directions

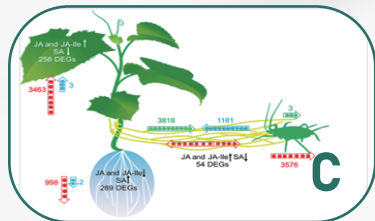
- Abiotic stress research (drought resistance, cold resistance, etc.)



- Research on plant growth, reproduction and development (differentiation, maturation, aging, apoptosis, etc.)

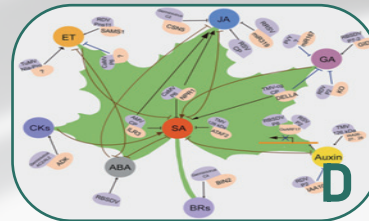


- Biological stress response research (disease and insect resistance, etc.)



## Phytohormone

- Plant hormone interactions



# Sample requirements

Products	Sample Requirements	Biological Replicates
Phytohormone family bucket(88 compounds)	Plant fresh tissue $\geq 300$ mg(such as stem/bud/node/leaf/-root/flower/fruit/callus, etc.)	$\geq 3$
GAs (18 compounds)	Plant fresh tissue $\geq 300$ mg(such as stem/bud/node/leaf/-root/flower/fruit/callus, etc.)	$\geq 3$
BRs	Plant fresh tissue $\geq 300$ mg(such as stem/bud/node/leaf/-root/flower/fruit/callus, etc.)	$\geq 3$

**METWARE BIO**

Innovative Metabolomics Insights for Better Health

 International Offices

8A Henshaw St., Woburn, MA, USA +1 (781)975-1541

 [www.metwarebio.com](http://www.metwarebio.com)

 [support-global@metwarebio.com](mailto:support-global@metwarebio.com)